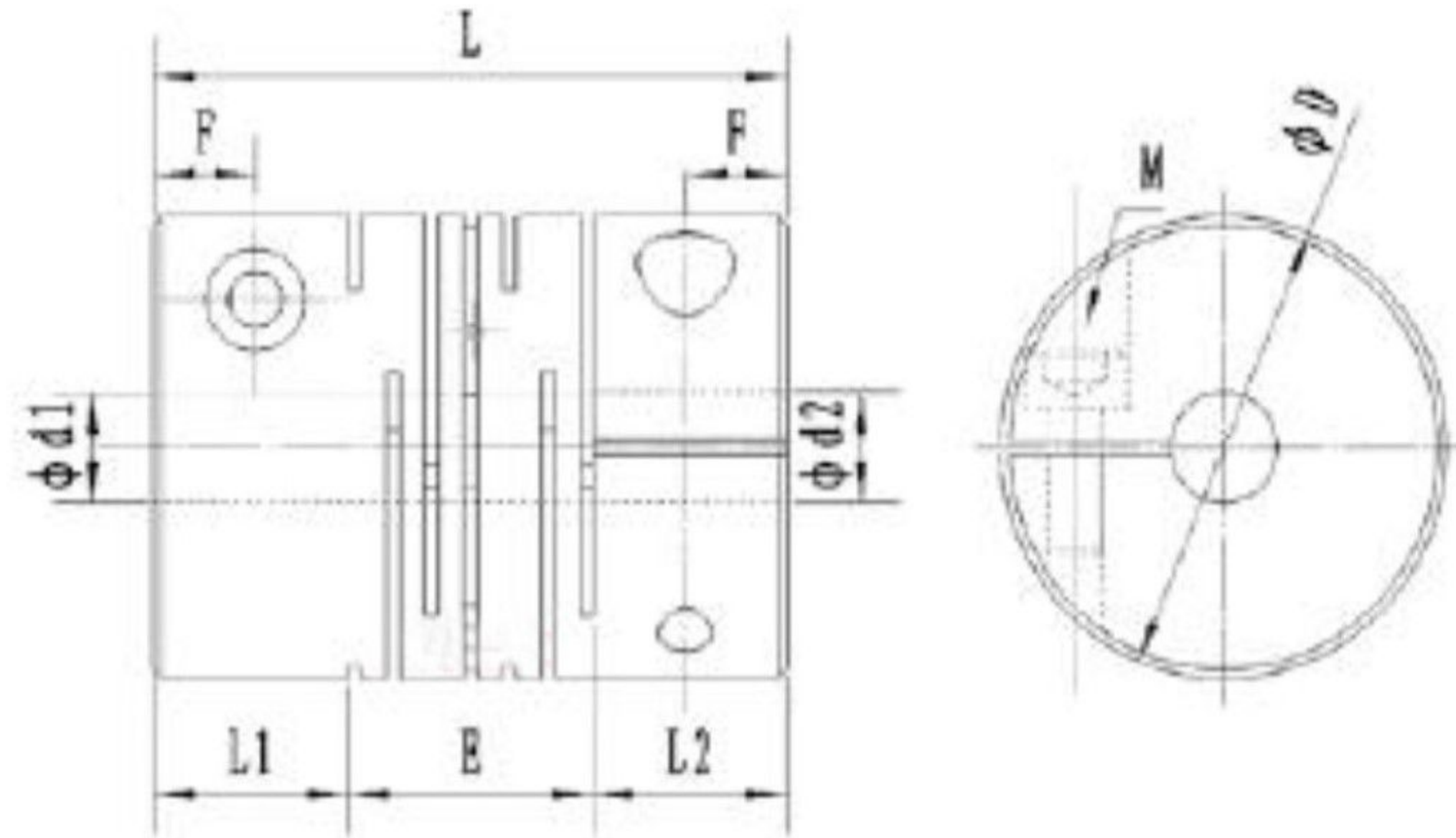


# Flexible Coupling-Parallel Clamp Type(FC-P2 Seires)



Parallel Clamp type  
FC-P2



Dimension: ( mm )

Material: Aluminum Alloy

Model	Bore d1,d2		D	L	L1/L2	E	F	M	Locking torque (N.m)
	Min.	Max.							
FC16-P2	5	8	16	23	6.5	10	3	M2.5	1
FC20-P2	5	10	20	26	7.5	11	3	M2.5	1
FC25-P2	6	12	25	31	8.5	14	4	M3	1.5
FC32-P2	8	16	32	41	12	17	6	M4	2.5
FC40-P2	8	20	40	56	17	22	8.5	M5	4
FC50-P2	12	25	50	71	21	29	10.5	M6	8
FC63-P2	14	35	63	90	26	38	13	M8	16

## Technical Data

Model	Rated torque (N.m)	Max. torque (N.m)	Allowable speed (min <sup>-1</sup> )	Static torsional stiffness (N.m/rad)	Moment of inertia (10 <sup>-6</sup> kgm <sup>2</sup> )	Axial deviation (mm)	Radial deviation (mm)	Angular deviation (°)	Net weight (g)
FC16-P2	0.5	1	24000	80	0.34	±0.4	0.1	2	9.2
FC20-P2	1	2	20000	170	0.91	±0.4	0.1	2	19
FC25-P2	2	4	15000	380	2.6	±0.5	0.15	2	37
FC32-P2	4	8	12000	500	9.7	±0.5	0.15	2	75
FC40-P2	8	16	9500	700	33	±0.5	0.2	2	145
FC50-P2	16	32	7000	1800	100	±0.5	0.2	2	300
FC63-P2	32	64	6000	3100	320	±0.5	0.2	2	580