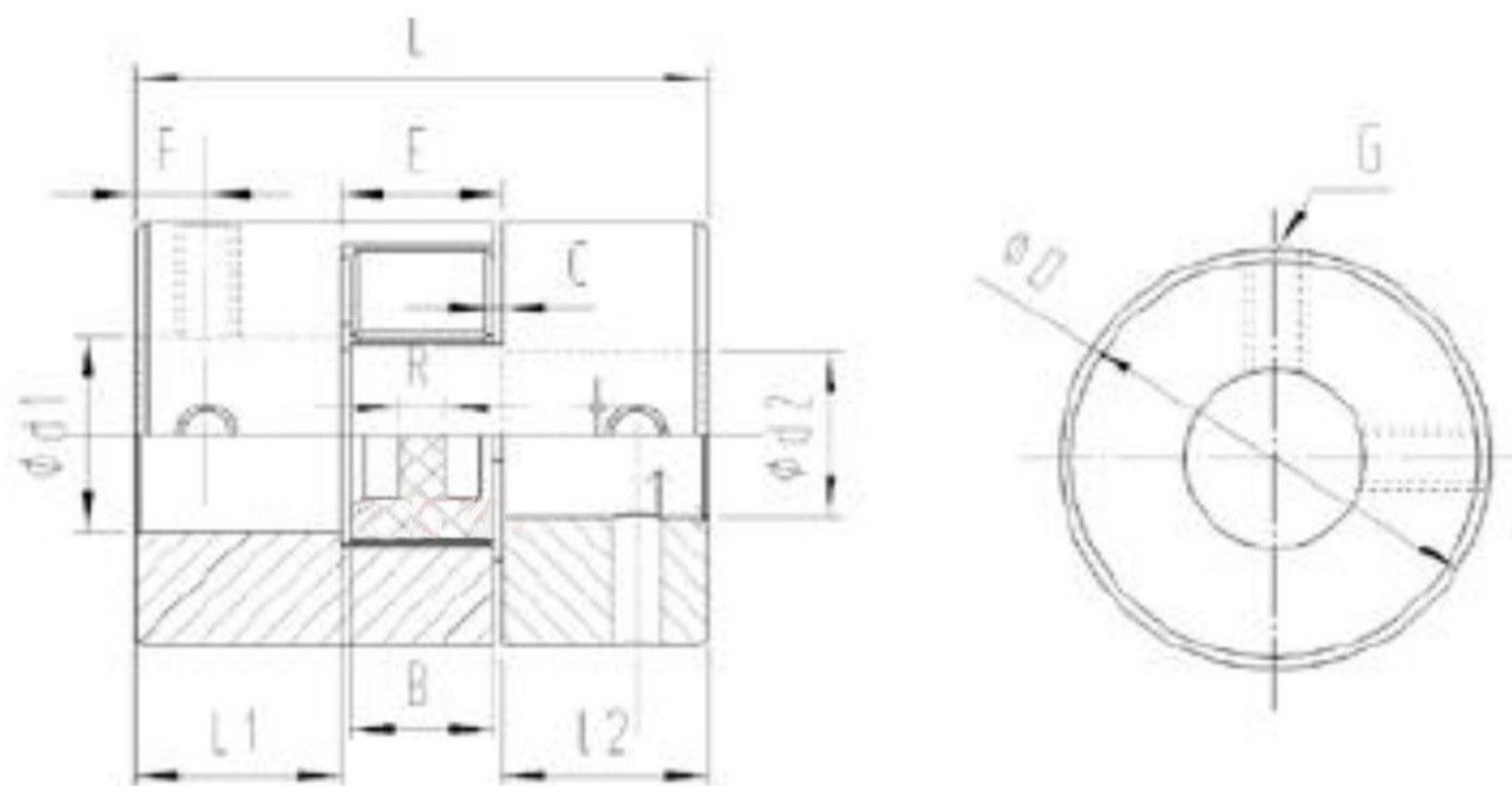


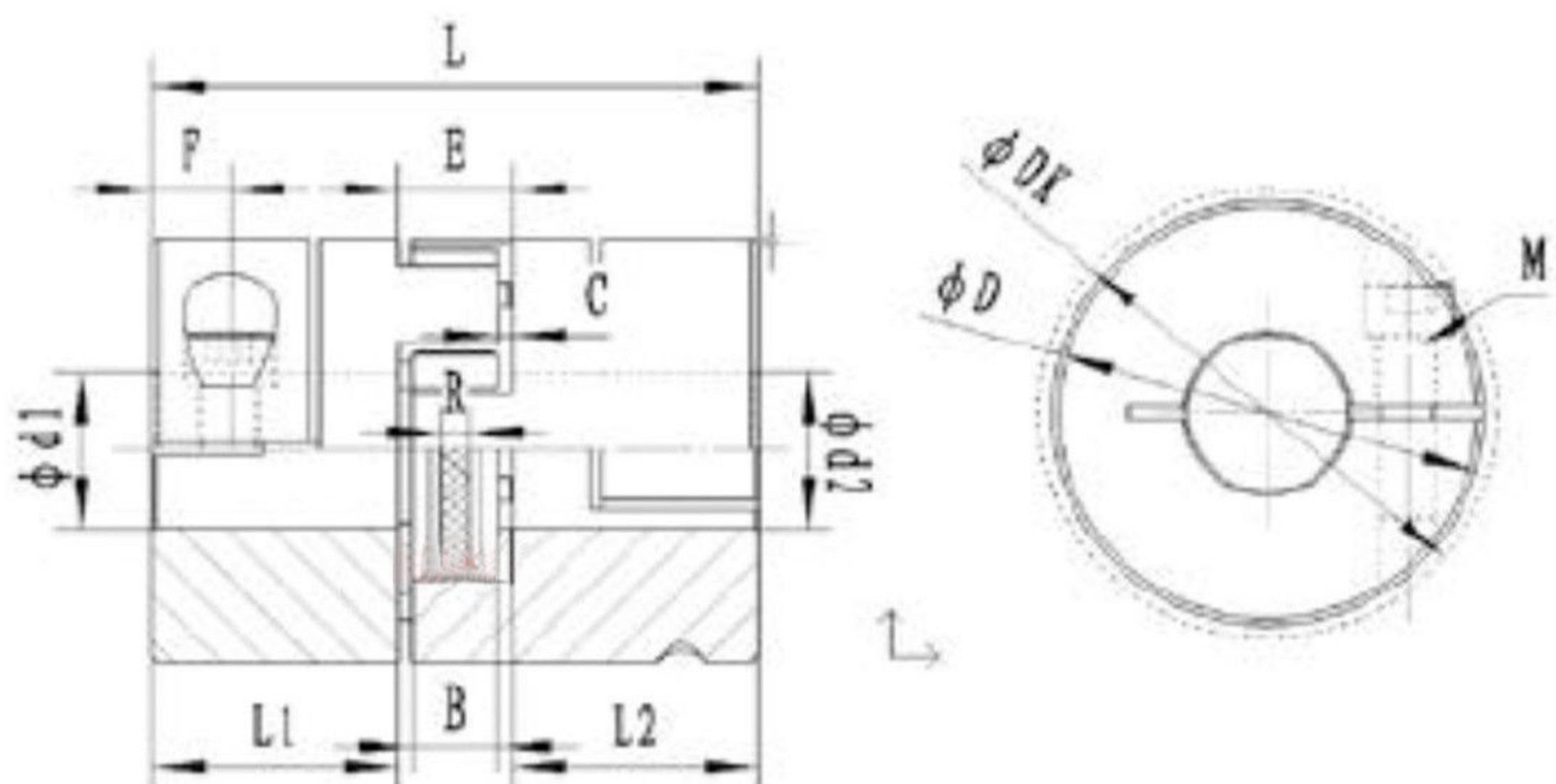
Jaw Coupling(JC Series)



Setscrew type
JC-S



Clamp type
JC-C



Dimension: (mm)

Material: Aluminum Alloy

Model	Bore (d1,d2)		D	L	L1	L2	F	E	B	C	R	DK	G	M	Locking torque (N.m)
	Min.	Max.													
JC14-S	3	7	14	22	7	7	3.5	8	6	1	-	14	M3	-	0.7
JC14-C	3	6	14	22	7	7	3.5	8	6	1	-	17.2	-	M2.5	0.5
JC16-S	3	7	16	22	7	7	3.5	8	6	1	-	16	M3	-	0.7
JC16-C	3	7	16	22	7	7	3.5	8	6	1	-	19.2	-	M2.5	0.5
JC20-S	4	10	20	30	10	10	5	10	8	1	1.2	20	M3	-	1.7
JC20-C	4	10	20	30	10	10	5	10	8	1	1.2	24	-	M3	1.5
JC25-S	4	12	25	34	11	11	5	12	10	1	2	25	M4	-	1.7
JC25-C	4	12	25	34	11	11	5	12	10	1	2	26.5	-	M4	1.5
JC30-S	5	16	30	35	11	11	5	13	10	1.5	2	30	M4	-	1.7
JC30-C	5	16	30	35	11	11	5	13	10	1.5	2	31.4	-	M4	1.7
JC40-S	8	24	40	66	25	25	10	16	12	2	4	40	M5	-	4
JC40-C	8	24	40	66	25	25	12	16	12	2	4	47	-	M5	8
JC55-S	10	28	55	78	30	30	10	18	14	2	4	55	M6	-	7
JC55-C	10	28	55	78	30	30	10.5	18	14	2	4	60	-	M6	8
JC65-S	12	38	65	90	35	35	15	20	15	2.5	4	65	M8	-	15
JC65-C	12	38	65	90	35	35	11.5	20	15	2.5	4	72	-	M8	16
JC80-S	16	45	80	114	45	45	15	24	18	3	4	80	M8	-	15
JC80-C	16	45	80	114	45	45	15.5	24	18	3	4	80	-	M8	16
JC95-S	20	55	95	126	50	50	20	26	20	3	-	95	M8	-	15
JC95-C	20	55	95	126	50	50	18	26	20	3	-	95	-	M10	40
JC105-S	20	62	105	140	56	56	20	28	21	3.5	-	105	M10	-	32
JC105-C	20	62	105	140	56	56	21	28	21	3.5	-	105	-	M12	115
JC120-S	20	74	120	160	65	65	20	30	22	4	-	120	M10	-	32
JC120-C	20	74	120	160	65	65	26	30	22	4	-	120	-	M12	115
JC135-S	22	80	135	185	75	75	20	35	26	4.5	-	135	M10	-	32
JC135-C	22	80	135	185	75	75	33	35	26	4.5	-	135	-	M12	115